

## Registration

Name: \_\_\_\_\_

Address: \_\_\_\_\_  
\_\_\_\_\_

Telephone: \_\_\_\_\_

E-Mail: \_\_\_\_\_

**I would like to attend the following Brain Injury Basics session (please check one):**

- \_\_\_\_\_ **January 29 - Hunterdon**  
Hunterdon Medical Center
- \_\_\_\_\_ **February 20 – Monmouth**  
Jersey Shore Medical Center
- \_\_\_\_\_ **March 8 – Somerset**  
Neurobehavioral Institute
- \_\_\_\_\_ **April 23 - Gloucester**  
Drucker Brain Injury Center
- \_\_\_\_\_ **May 21 - Camden**  
Bancroft NeuroHealth
- \_\_\_\_\_ **June 27 - Warren**  
Warren Hospital

**Please mail or fax registration to:**

Brain Injury Association of NJ  
1090 King George Post Rd, Suite 708  
Edison, NJ 08837

Fax: (732) 738-1132

**OR Register online at [www.bianj.org](http://www.bianj.org)**

Directions to the sites will be included in your registration confirmation. Directions are also available online at [www.bianj.org](http://www.bianj.org) in the Brain Injury Basics section.

**For more information, please contact:**

**Brain Injury Association of NJ, Inc.**

1090 King George Post Rd., Suite 708  
Edison, NJ 08837

Telephone: (732) 738-1002

Helpline: 1-800-669-4323

Fax: (732) 738-1132

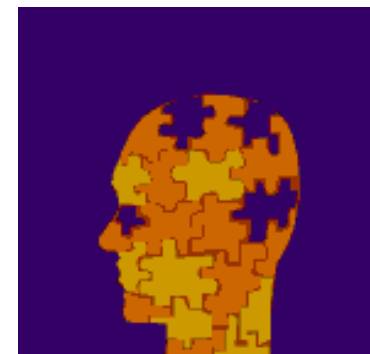
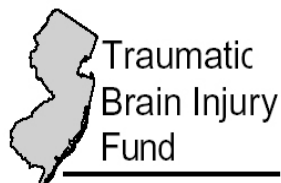
Website: [www.bianj.org](http://www.bianj.org)

E-Mail: [info@bianj.org](mailto:info@bianj.org)

**In case of inclement weather, call the Brain Injury Association of New Jersey office the morning of the session. A message will indicate any cancellations.**

---

**These sessions are made possible through the New Jersey Traumatic Brain Injury Fund, administered by the New Jersey Department of Human Services, Division of Disability Services.**



---

# BRAIN INJURY BASICS FOR FAMILIES

---

Brain injury happens in an instant.  
It affects a family for a lifetime.  
Come learn information that will help  
you and your family.

Offered by the Brain Injury  
Association of New Jersey.

---

**January - June, 2007**

## What will I learn?

Attendees will learn about the impact of brain injury on families.

### This free two-hour presentation will...

- Provide an overview of brain injury, including definitions and the rate of incidence
- Provide information on the effects of brain injury on families, including the stages of grief family members experience
- Provide information about the common consequences of brain injury: cognitive, physical, and emotional
- Provide information about strategies families can utilize and tips for caregivers
- Provide information on resources available through the Brain Injury Association of New Jersey and agencies throughout the state

**No Brain Injury  
Is Too Mild To Ignore,  
Or Too Severe To Lose Hope**

Six free educational sessions for families are scheduled to address this important topic. Please choose the most convenient date and location:

- **January 29, 6:30-8:30pm, Monday  
Hunterdon County** – Hunterdon Medical Center, 2100 Wescott Drive, Flemington, NJ 08822
- **February 20, 6:30-8:30pm, Tuesday  
Monmouth County** – Jersey Shore Medical Center, 1944 Route 33, Neptune, NJ 07754
- **March 8, 6:30-8:30pm, Thursday  
Somerset County** – Neurobehavioral Institute of New Jersey, 626 North Thompson Street, Raritan, NJ 08869
- **April 23, 6:30-8:00pm, Monday  
Gloucester County** – Drucker Brain Injury Center at MossRehab, 135 South Broad Street, Woodbury, NJ 08096
- **May 21, 7:00-9:00pm, Monday  
Camden County** – Bancroft NeuroHealth, 425 Kings Highway East, Haddonfield, NJ 08033
- **June 27, 6:30-8:30pm, Wednesday  
Warren County** – Warren Hospital, 185 Roseberry Street, Phillipsburg, NJ 08865

## The Silent Epidemic

One out of every 1,000 children and adults in New Jersey are hospitalized each year because of brain injury. Thousands of others sustain brain injuries, including concussions, not resulting in a trip to the hospital. More often than not, families move on from hospital and rehabilitation settings with many unanswered questions about brain injury.

---

### What families have been saying about Brain Injury Basics for Families:

- “Excellent and informative session for both patient and caregiver – covering all aspects of living with brain injury.”
- “An abundance of information was presented.”
- “A very comprehensive overview of the topic of brain injury.”
- “I learned that I am not alone and that there is help.”

---

**Each session will be facilitated by Peggy DiTommaso, MSW. For over 17 years, Peggy has volunteered her time as the support group leader for the Brain Injury Association of New Jersey affiliated support group in Monmouth County.**

---